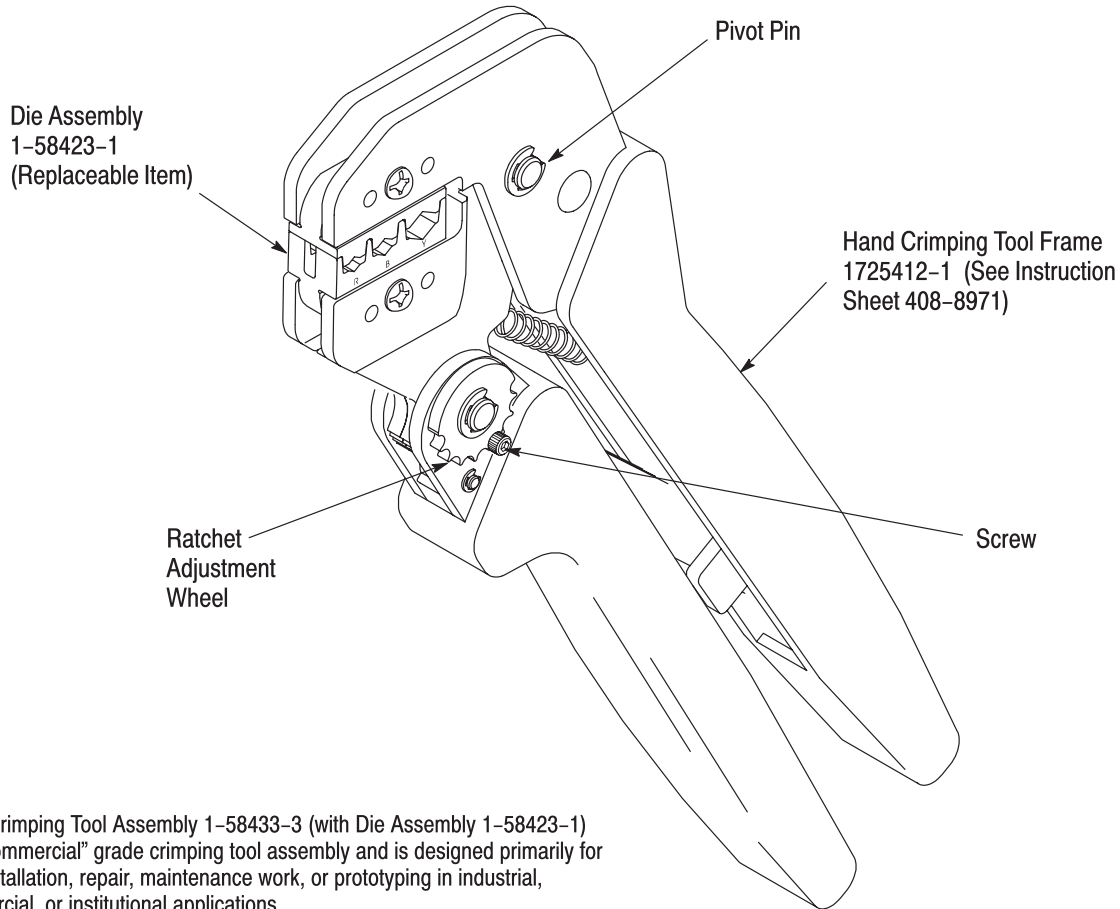


PROPER USE GUIDELINES

Cumulative Trauma Disorders can result from the prolonged use of manually powered hand tools. Hand tools are intended for occasional use and low volume applications. A wide selection of powered application equipment for extended-use, production operations is available.



Hand Crimping Tool Assembly 1-58433-3 (with Die Assembly 1-58423-1) is a "Commercial" grade crimping tool assembly and is designed primarily for field installation, repair, maintenance work, or prototyping in industrial, commercial, or institutional applications.

Figure 1

1. INTRODUCTION

This instruction sheet provides application and maintenance procedures for Hand Crimping Tool 1-58433-3. See Figure 1.

The tool is designed to crimp Red, Blue, and Yellow terminals onto pre-stripped wire

CAUTION Terminals crimped with Hand Crimping Tool 1-58433-3 or with Die Assembly 1-58423-1 are not Listed by UL or CSA.

NOTE All dimensions are in millimeters [with inches in brackets].

2. DESCRIPTION (Figure 1)

The tool has a replaceable die assembly with three crimping areas which are marked with the letters R, B, and Y. The letter corresponds to the insulation color of the terminal (Red, Blue, or Yellow) to be crimped in the crimping area.

NOTE This tool is designed to accept other dies used in the ATS tool line. Remove the retaining screws in the tool jaws and install dies with their identifying marks (color dot codes, crimp dimensions, cable types, or connector type) facing the ratchet adjustment wheel side of the tool. For details concerning die installation, refer to the instruction sheet packaged with the dies.

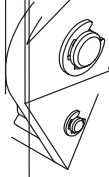


Figure 2

